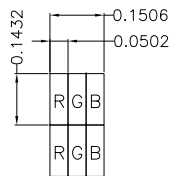
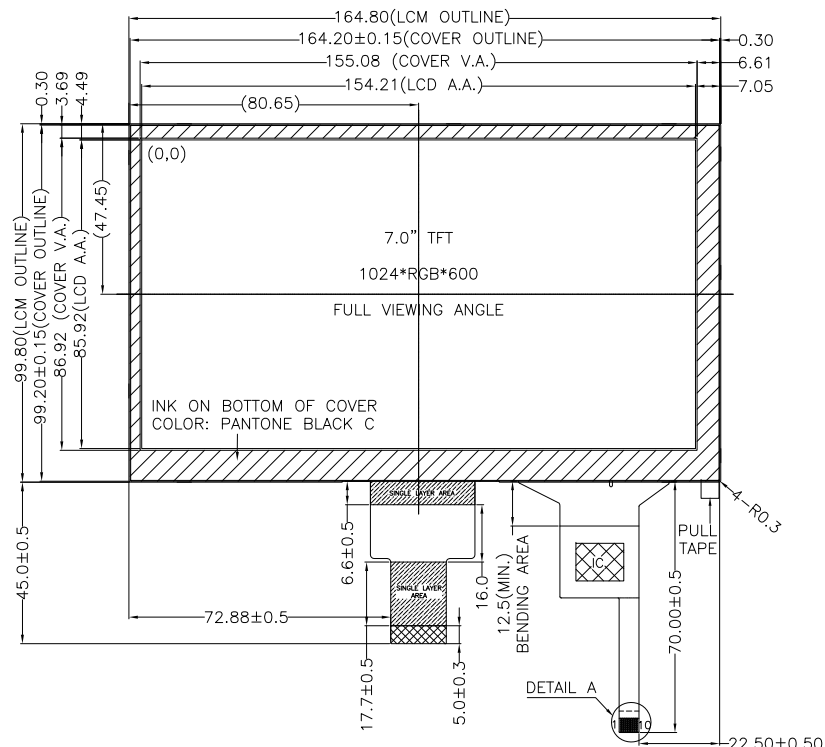
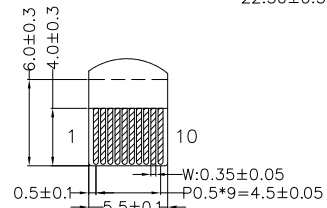


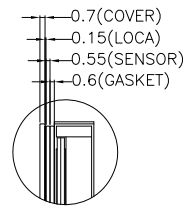
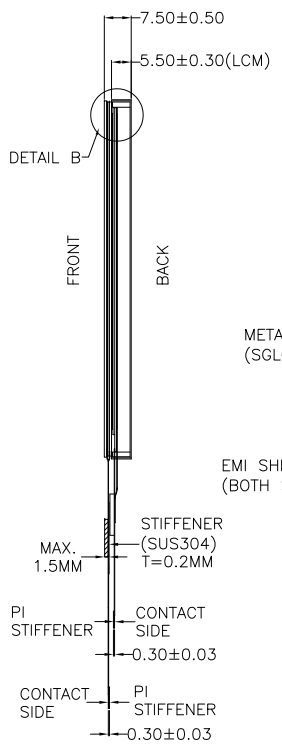
NO MECHANICAL HOUSING TO HOLD THE TFT AND THE TOUCH PANEL ON THIS PRODUCT, SO THE END UNIT'S MECHANICAL DESIGN MUST INCLUDE A HOUSING FOR PREVENTING THE SEPARATION OF THE TFT AND THE TOUCH PANEL.



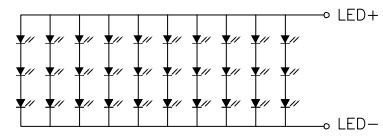
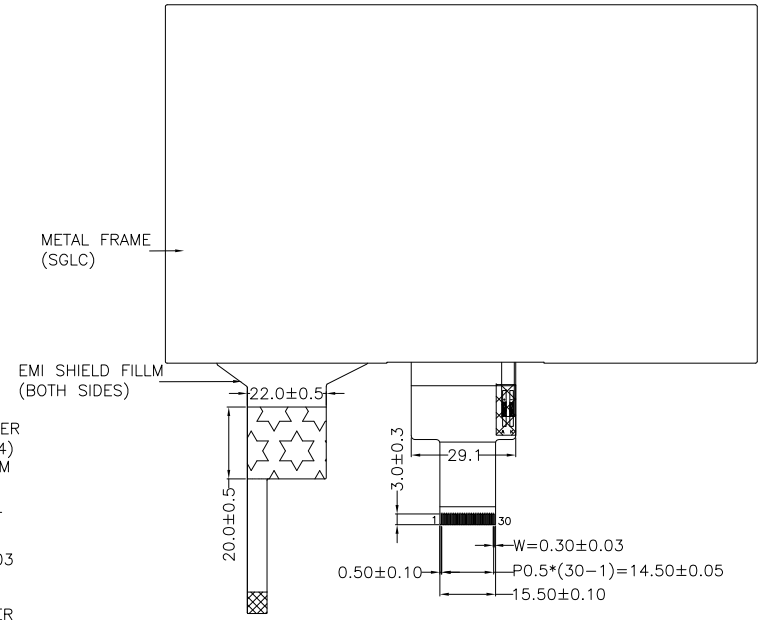
PIXEL DETAIL
SCALE 100:1



DETAIL A
SCALE 4:1



DETAIL B
SCALE 2:1



BACKLIGHT CIRCUIT DIAGRAM

PIN ASSIGNMENT FOR LCM	
PIN	SYMBOL
1	LED+
2	LED+
3	VGH
4	VGL
5	UPDN
6	SHLR
7	LED-
8	LED-
9	AVDD
10	GND
11	MIPI_TDP3
12	MIPI_TDN3
13	GND
14	MIPI_TDP2
15	MIPI_TDN2
16	GND
17	MIPI_TCP
18	MIPI_TCN
19	GND
20	MIPI_TDP1
21	MIPI_TDN1
22	GND
23	MIPI_TDP0
24	MIPI_TDN0
25	GND
26	STBYB
27	LRSTB
28	VDD
29	VDD
30	VCOM
PIN ASSIGNMENT FOR CTP	
PIN	SYMBOL
1	VSS
2	VDD
3	SCL
4	NC
5	SDA
6	NC
7	/RST
8	NC
9	/INT
10	VSS

- NOTES FOR TFT:
1. DISPLAY TYPE: IPS TFT, TRANSMISSIVE, NORMALLY BLACK
 2. OPERATING VOLTAGE: VDD=3.3V
 3. VIEWING DIRECTION: FULL VIEWING ANGLE
 4. DRIVER IC: EK79007AD2 + EK73217BCGA
 5. LED BACKLIGHT: 30-CHIP WHITE LED, If=200mA, Vf=8.4V~10.2V
 6. TOP POLARIZER SURFACE TREATMENT: ANTI-GLARE
 7. ONLY THE SINGLE LAYER AREA ON FPC IS BENDABLE AND THE MINIMUM BEND RADIUS IS 1.5MM

- NOTES FOR CTP:
1. 7.0 INCH PROJECTIVE CAPACITIVE TOUCH PANEL
 2. OPERATING VOLTAGE: VCC=3.3V
 3. COVER GLASS + SENSOR GLASS +FPCA
 4. IC DRIVER: FT5426-003
 5. INTERFACE: IIC
 6. MULTI FINGER: UP TO 10
 7. RESOLUTION: 1024*600
 8. HARDNESS OF COVER SURFACE: 7H
 9. FIRMWARE FILE: MI0700CSP-C4(FT5426-003)_V11_D01_20211015_ALL.BIN

- NOTES FOR OTHERS:
1. OPERATING TEMP.: -20°C ~ 70°C
 2. STORAGE TEMP.: -30°C ~ 80°C
 3. SURFACE LUMINANCE: 400CD/M²(TYP) WITH CTP
 4. GENERAL TOLERANCE: ±0.3MM
 5. ROHS COMPLIANT

MULTI-INNO TECHNOLOGY CO., LTD.

DRAWN BY:	RITA	2023.04.13		MODULE P/N:
CHECKED BY:			SCALE : 1/1	MI0700CBT-1CP1
APPROVED BY:			UNIT: mm	DESCRIPTION:
VERSION NO:	01		SHEET NO.: 1/1	TFT + CTP MODULE

01	FIRST ISSUE	RITA	2023.04.13
VER.	REVISED DESCRIPTION	REVISER	DATE